

**ULTIFRESH.NET**

we deliver fresh apparels

Follow Us @:



Website



Facebook



Instagram

Visit Us @:

<https://www.ultifresh.net>

# ULTIFRESH

## Apparels

Anti-Bacterial | Anti-Odor

Vol. 7  
2023 / 2024



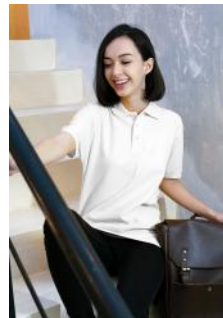
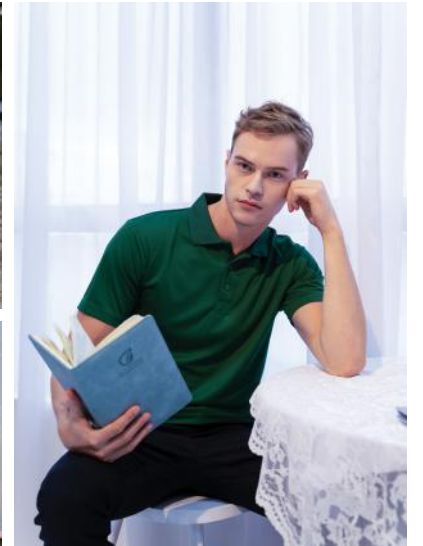
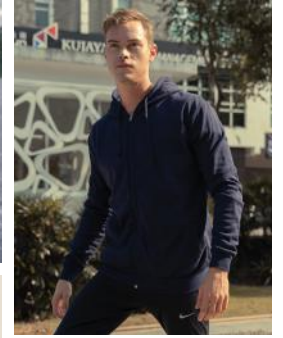
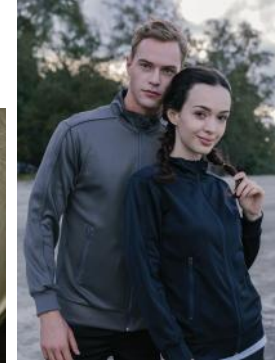
Designed in Singapore



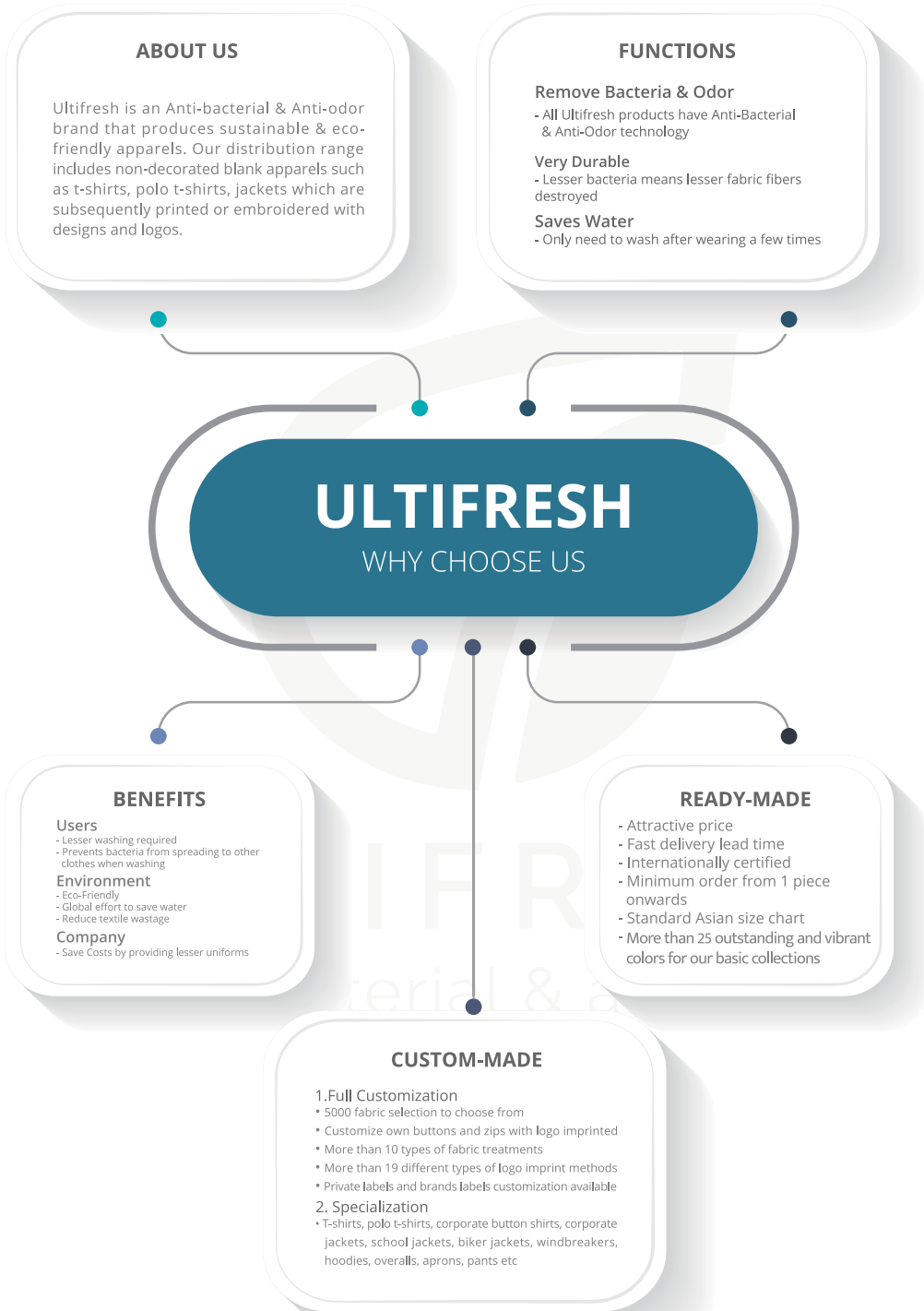


**NEW!**  
BCR0102 : BLACK  
BEAM CLOVERPLUS  
COTTON

**HOT  
SELLING!**

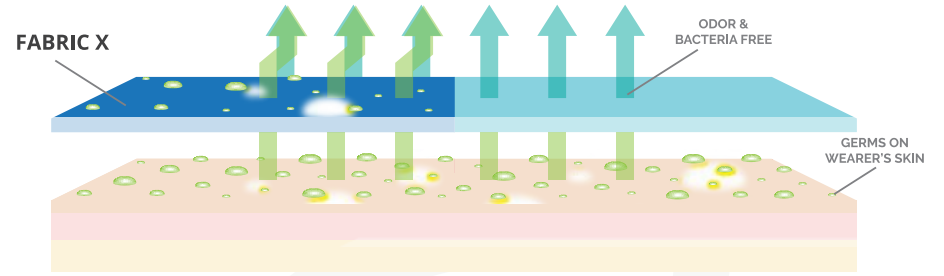


**2023 - 2024**



**ABOUT ULTIFRESH**

Ultifresh is a patented fabric technology that kills 99.94% bacteria permanently. The anti-bacterial & anti-odor features can be integrated into any fabric without affecting the outlook and the hand feel of the apparel.



**BENEFITS OF ULTIFRESH**

Ultifresh products are designed with copper's anti-microbial properties, allowing it to self sterilize. It can also prevent bacteria growth, making it a safer apparel for everyone.



**ANTI-ODOR**

Ultifresh technology eliminates odor causing germs on the fabric itself, leaving the wearer fresh all day long.



**INCREASED DURABILITY**

Ultifresh prevents microbes from living on the apparel. Thus, it increases the longevity of the apparel, resulting in lesser textile wastage each year.



**ANTI-BACTERIAL**

We come into contact with thousands of unseen bacteria everyday. Ultifresh fabric solution kills bacteria minutes upon contact.



**SAVES WATER**

Ultifresh apparels require lesser washing cycles and reduces water usage by up to 75%! This unique feature allows the wearer to save water without compromising on safety.



**COST SAVING**

Ultifresh lowers the turnover of uniforms and apparels due to its durability, which allows wearer to wear longer without washing.



**ECO - FRIENDLY**

Ultifresh supports the global Go-Green effort in conserving the Earth's natural resources such as water and reducing textile wastage.



# CONTENTS

	Latest Collection	1 - 2
	Why Choose Ultifresh	3
	About Ultifresh	4
<b>01</b>	<b><u>Ultifresh Towel Series</u></b>	
	Anti-Bacterial Quick-Dry Towel	7 - 8
<b>02</b>	<b><u>Ultifresh Performance Series</u></b>	
	Crew Neck	9 - 12
	Polo T-Shirt	13 - 14
	Crew Neck Long Sleeve	15
	Polo T-Shirt Long Sleeve	16
	Sports Singlet	17 - 18
	Sports Shorts	19 - 20
<b>03</b>	<b><u>Ultifresh Design Series</u></b>	
	Contrast Series	21 - 28
	Oriental Series	29 - 30
	Heather Series	31 - 32
	Hybrid Series	33 - 36
	Double Pique Series	37 - 40
<b>04</b>	<b><u>Ultifresh Outerwear Series</u></b>	
	Bomber Jacket	41 - 42
	Full Moon Zip Up Jacket	43 - 44
	Varsity Jacket	45 - 46
<b>05</b>	<b><u>BEAM Series</u></b>	
	Cotton Short Sleeve T-Shirt (Kids)	49 - 50
	Cotton Short Sleeve T-Shirt	51 - 54
	Cotton Polo T-Shirt	55 - 56
	Cotton Long Sleeve T-Shirt	57 - 58
	Hoodie Without Zip	59 - 60
	Hoodie With Zip	61 - 62
	Long Sleeve Sweat Shirt	63 - 64
	Jacket In A Bag	65 - 66
	Polyester Apron	67 - 68
	Oxford Corporate Shirt	69 - 70
	Corporate Long Sleeve Button Shirt	71 - 72
	Corporate Short Sleeve Button Shirt	73 - 74
	Corporate Blazer, Pant & Skirt	75 - 78
<b>06</b>	<b><u>Pre Order</u></b>	
	Cotton Short Sleeve T-Shirt (Kids)	80
	Cotton Short Sleeve T-Shirt	81
	Cotton Polo T-Shirt	82





- Anti-Bacterial
- Nylon Chinlon, Polyester
- Compact, Lightweight, Quick-Dry
- Open For Customization Of Logo Webbing



**USTW05  
MAROON**



# ANTI-BACTERIAL QUICK-DRY TOWEL

## UBTW BATH TOWEL

Length	Width	Weight
55.1"/140cm	29.5"/75cm	220g

Note : Size may varies +/-5% from the above mentioned chart.



UBTW01  
PEARL WHITE



UBTW03  
NAVY



UBTW05  
MAROON



UBTW06  
LIGHT GREY



UBTW10  
LIGHT BLUE



UBTW11  
ADMIRAL BLUE



UBTW23  
PURPLE



UBTW28  
LIGHT PINK



UBTW46  
KELLY GREEN

## USTW SPORTS TOWEL

Length	Width	Weight
25.6"/65cm	13.8"/35cm	40g

Note : Size may varies +/-5% from the above mentioned chart.



USTW01  
PEARL WHITE



USTW03  
NAVY



USTW05  
MAROON



USTW06  
LIGHT GREY



USTW10  
LIGHT BLUE



USTW11  
ADMIRAL BLUE



USTW23  
PURPLE



USTW28  
LIGHT PINK



USTW46  
KELLY GREEN



# ULTIFRESH PERFORMANCE

Ultifresh makes you feel comfortable the way it is meant to be. #feelgood

SGS Intertek  
TEST REPORT Digital Quality Assured.

UDF2202  
Black

ULTIFRESH  
anti-bacterial & anti-odor



Anti Bacterial & Anti-Odor Finishing

Self Fabric Collar



## UDF22 CREW NECK T-SHIRT (KIDS)

Size	Shoulder	Chest	Sleeve	Length
24	11.5"	25"	4.5"	15.5"
26	12"	27"	5"	17"
28	12.5"	29"	5.5"	18.5"
30	13"	31"	6"	20"
32	13.5"	33"	6.5"	21.5"

Note : Size may varies +/-5% from the above mentioned chart.

- 100% Performance Dri-Fit Polyester
- Microfiber Polyester Eyelet Weave

- 170gsm | 5.01oz (UDF2201)
- 160gsm | 4.72oz (THE REST)

### COLORS SELECTION







**UDF0126**  
**TIFFANY BLUE**

# ULTIFRESH PERFORMANCE

## UDF01

### CREW NECK T-SHIRT (UNISEX)

- 100% Performance Dri-Fit Polyester
- Microfiber Polyester Eyelet Weave
- Anti Bacterial & Anti Odor Finishing
- Self Fabric Collar
- Eco Friendly & Water Saving

- 170gsm | 5.01oz (UDF0101)
- 160gsm | 4.72oz (THE REST)

Size	Shoulder	Chest	Sleeve	Length
2XS	15"	34"	7"	25"
XS	16"	36"	7.5"	26"
S	17"	38"	8"	27"
M	18"	40"	8.5"	28"
L	19"	42"	9"	29"
XL	20"	44"	9.5"	30"
2XL	21"	46"	10"	31"
3XL	22"	48"	10.5"	32"
5XL	24"	52"	11.5"	33.5"
7XL	26"	56"	12"	36"

Note : Size may varies +/-5% from the above mentioned chart.

### COLORS SELECTION







**UDF0509**  
**MAGENTA PINK**

**UDF0521**  
**BASIL GREEN**

# ULTIFRESH PERFORMANCE

## UDF05 POLO T-SHIRT (UNISEX)

- 100% Performance Dri-Fit Polyester
- Microfiber Polyester Eyelet Weave
- Anti Bacterial & Anti Odor Finishing
- Matching Collar Rib
- Eco Friendly & Water Saving
- 170gsm | 5.01oz (UDF0501)
- 160gsm | 4.72oz (THE REST)

Size	Shoulder	Chest	Sleeve	Length
2XS	15"	34"	7"	25"
XS	16"	36"	7.5"	26"
S	17"	38"	8"	27"
M	18"	40"	8.5"	28"
L	19"	42"	9"	29"
XL	20"	44"	9.5"	30"
2XL	21"	46"	10"	31"
3XL	22"	48"	10.5"	32"
5XL	24"	52"	11.5"	33.5"
7XL	26"	56"	12"	36"

Note : Size may varies +/-5% from the above mentioned chart.

### COLORS SELECTION







# ULTIFRESH PERFORMANCE

## UDF26 CREW NECK LONG SLEEVE T-SHIRT (UNISEX)

Size	Shoulder	Chest	Sleeve	Length
2XS	15"	34"	19"	25"
XS	16"	36"	20"	26"
S	17"	38"	21"	27"
M	18"	40"	22"	28"
L	19"	42"	23"	29"
XL	20"	44"	23.5"	30"
2XL	21"	46"	23.5"	31"
3XL	22"	48"	23.5"	32"
5XL	24"	52"	24.5"	33.5"

Note : Size may varies +/-5% from the above mentioned chart.

- 100% Performance Dri-Fit Polyester
- Microfiber Polyester Eyelet Weave
- Eco Friendly & Water Saving

- 170gsm | 5.01oz (UDF2601)
- 160gsm | 4.72oz (THE REST)

### COLORS SELECTION



# ULTIFRESH PERFORMANCE

## UDF27 POLO LONG SLEEVE T-SHIRT (UNISEX)

Size	Shoulder	Chest	Sleeve	Length
2XS	15"	34"	19"	25"
XS	16"	36"	20"	26"
S	17"	38"	21"	27"
M	18"	40"	22"	28"
L	19"	42"	23"	29"
XL	20"	44"	23.5"	30"
2XL	21"	46"	23.5"	31"
3XL	22"	48"	23.5"	32"
5XL	24"	52"	24.5"	33.5"

Note : Size may varies +/-5% from the above mentioned chart.

- 100% Performance Dri-Fit Polyester
- Microfiber Polyester Eyelet Weave
- Eco Friendly & Water Saving

- 170gsm | 5.01oz (UDF2701)
- 160gsm | 4.72oz (THE REST)

### COLORS SELECTION







# ULTIFRESH PERFORMANCE

## UDF02

### SPORTS SINGLET (UNISEX)

- 100% Dri-Fit Polyester
- Interlock Weave
- Moisture Wicking & Sweat Absorbent
- Eco Friendly & Water Saving

• 160gsm | 4.72oz

Size	Shoulder	Chest	Length
2XS	15.5"	34"	25"
XS	16"	36"	26"
S	16.5"	38"	27"
M	17"	40"	28"
L	17.5"	42"	29"
XL	18"	44"	30"
2XL	18"	46"	31"
3XL	18.5"	48"	32"
5XL	19.5"	52"	33.5"

Note : Size may varies +/-5% from the above mentioned chart.

### COLORS SELECTION



UDF0201  
PEARL WHITE



UDF0202  
ONYX BLACK



UDF0203  
NAVY BLUE



UDF0204  
CRIMSON RED



UDF0205  
MAROON RED



UDF0207  
IRON GREY



UDF0212  
ROYAL BLUE



UDF0221  
BASIL GREEN





# ULTIFRESH PERFORMANCE

## UDF06

### SPORTS SHORTS (UNISEX)

- 100% Dri-Fit Polyester
- Interlock Weave
- Moisture Wicking & Sweat Absorbent
- Eco Friendly & Water Saving

• 160gsm | 4.72oz

Size	Waist	Length
2XS	28"	14.5"
XS	29"	15"
S	31"	15.5"
M	32"	16"
L	34"	17"
XL	36"	17.5"
2XL	37"	18"
3XL	38"	19"
5XL	40"	19"

Note : Size may varies +/-5% from the above mentioned chart.

### COLORS SELECTION



UDF0601  
PEARL WHITE



UDF0602  
ONYX BLACK



UDF0603  
NAVY BLUE





**UDF07**  
**SIDE PANEL CREW NECK**  
**T-SHIRT (UNISEX)**

- 100% Dri-Fit Polyester
- Interlock Weave
- Moisture Wicking & Sweat Absorbent
- Eco Friendly & Water Saving

**ULTIFRESH**  
**CONTRAST**

Size	Shoulder	Chest	Sleeve	Length
2XS	15"	34"	7"	25"
XS	16"	36"	7.5"	26"
S	17"	38"	8"	27"
M	18"	40"	8.5"	28"
L	19"	42"	9"	29"
XL	20"	44"	9.5"	30"
2XL	21"	46"	10"	31"
3XL	22"	48"	10.5"	32"
5XL	24"	52"	11.5"	33.5"

Note : Size may varies +/-5% from the above mentioned chart.

• 160gsm | 4.72oz

**COLORS SELECTION**



UDF0701  
WHITE + ORANGE



UDF0702  
BLACK + WHITE



UDF0703  
NAVY + WHITE



UDF0710  
LIGHT BLUE + WHITE



UDF0723  
PURPLE + WHITE



UDF0733  
BLUE + ORANGE





Contrast Color Piping with Raglan Sleeve Cut

Anti Bacterial & Anti-Odor Finishing



# ULTIFRESH CONTRAST

Size	Chest	Sleeve	Length
2XS	34"	7"	25"
XS	36"	7.5"	26"
S	38"	8"	27"
M	40"	8.5"	28"
L	42"	9"	29"
XL	44"	9.5"	30"
2XL	46"	10"	31"
3XL	48"	10.5"	32"
5XL	52"	11.5"	33.5"

## UDP08 VOV PIPING CREW NECK T-SHIRT (UNISEX)

- 100% Dri-Fit Polyester
- Eyelet Weave
- Moisture Wicking & Sweat Absorbent
- Eco Friendly & Water Saving

Note : Size may varies +/-5% from the above mentioned chart.

- 170gsm | 5.01oz (UDP0801)
- 160gsm | 4.72oz (THE REST)

### COLORS SELECTION



UDP0801  
WHITE + BLACK



UDP0802  
BLACK + RED



UDP0807  
DARK GREY + WHITE



UDP0813  
ORANGE + BLACK



**UDF13**  
**CS SASH POLO T-SHIRT**  
**(UNISEX)**

- 100% Dri-Fit Polyester
- Interlock Weave
- Moisture Wicking & Sweat Absorbent
- Eco Friendly & Water Saving

**ULTIFRESH**  
**CONTRAST**

Size	Shoulder	Chest	Sleeve	Length
2XS	15"	34"	7"	25"
XS	16"	36"	7.5"	26"
S	17"	38"	8"	27"
M	18"	40"	8.5"	28"
L	19"	42"	9"	29"
XL	20"	44"	9.5"	30"
2XL	21"	46"	10"	31"
3XL	22"	48"	10.5"	32"
5XL	24"	52"	11.5"	33.5"

Note : Size may varies +/-5% from the above mentioned chart.

• 160gsm | 4.72oz

**COLORS SELECTION**



UDF1301  
WHITE + GREEN  
+ DARK GREY



UDF1302  
BLACK + RED



UDF1306  
LIGHT GREY +WHITE  
+ BLUE



UDF1307  
DARK GREY +WHITE  
+ BLUE





Anti Bacterial  
& Anti-Odor  
Finishing

Contrast  
Shoulder Panel



### UDF19 T MAX POLO T-SHIRT (UNISEX)

- 100% Dri-Fit Polyester
- Interlock Weave
- Moisture Wicking & Sweat Absorbent
- Eco Friendly & Water Saving

# ULTIFRESH CONTRAST

Size	Shoulder	Chest	Sleeve	Length
2XS	15"	34"	7"	25"
XS	16"	36"	7.5"	26"
S	17"	38"	8"	27"
M	18"	40"	8.5"	28"
L	19"	42"	9"	29"
XL	20"	44"	9.5"	30"
2XL	21"	46"	10"	31"
3XL	22"	48"	10.5"	32"
5XL	24"	52"	11.5"	33.5"

Note : Size may varies +/-5% from the above mentioned chart.

• 160gsm | 4.72oz

## COLORS SELECTION



UDF1902  
BLACK + RED



UDF1906  
GREY + LIGHT BLUE



UDF1912  
ROYAL BLUE + GREY



UDF1930  
GREEN + WHITE





# ULTIFRESH ORIENTAL

## UDF20 ZIP UP COLLAR POLO T-SHIRT (UNISEX)

- 100% Dri-Fit Polyester
- Interlock Weave
- Contrast Piping
- Moisture Wicking & Sweat Absorbent
- Eco Friendly & Water Saving

Size	Shoulder	Chest	Sleeve	Length
2XS	15"	34"	7"	25"
XS	16"	36"	7.5"	26"
S	17"	38"	8"	27"
M	18"	40"	8.5"	28"
L	19"	42"	9"	29"
XL	20"	44"	9.5"	30"
2XL	21"	46"	10"	31"
3XL	22"	48"	10.5"	32"
5XL	24"	52"	11.5"	33.5"

Note : Size may varies +/-5% from the above mentioned chart.

• 160gsm | 4.72oz

### COLORS SELECTION



UDF2001  
WHITE + YELLOW



UDF2002  
BLACK + RED



UDF2003  
DARK BLUE + ROYAL BLUE



UDF2004  
RED + BLACK



UDF2010  
LIGHT BLUE + WHITE



UDF2013  
ORANGE + WHITE



UDF2027  
WHITE + RED







**UDF17**  
**EDGE CREW NECK**  
**T-SHIRT (UNISEX)**

- 47% Performance Polyester
- 47% Melange Dri-Fit +6% Spandex
- Moisture Wicking & Sweat Absorbent
- Eco Friendly & Water Saving

**ULTIFRESH**  
**HEATHER**

Size	Shoulder	Chest	Sleeve	Length
2XS	15"	34"	7"	25"
XS	16"	36"	7.5"	26"
S	17"	38"	8"	27"
M	18"	40"	8.5"	28"
L	19"	42"	9"	29"
XL	20"	44"	9.5"	30"
2XL	21"	46"	10"	31"
3XL	22"	48"	10.5"	32"
5XL	24"	52"	11.5"	33.5"

Note : Size may varies +/-5% from the above mentioned chart.

• 170gsm | 5.01oz

**COLORS SELECTION**



UDF1702  
ONYX BLACK



UDF1703  
NAVY BLUE



UDF1706  
LIGHT GREY



UDF1710  
LIGHT BLUE



UDF1712  
ROYAL BLUE



**ULTIFRESH**  
anti-bacterial & anti-odor

**GOLD**  
SERIES AVAILABLE

**intertek**  
Total Quality. Assured.

**SGS**  
TEST REPORT



**UCP11**  
**MINIMALIST POLO T-SHIRT**  
**(UNISEX)**

- 50% Polyester + 50% Cotton
- Outer Polyester + Inner Cotton
- Moisture Wicking & Sweat Absorbent
- Eco Friendly & Water Saving

**ULTIFRESH**  
**HYBRID**

Size	Shoulder	Chest	Sleeve	Length
2XS	15"	34"	7"	25"
XS	16"	36"	7.5"	26"
S	17"	38"	8"	27"
M	18"	40"	8.5"	28"
L	19"	42"	9"	29"
XL	20"	44"	9.5"	30"
2XL	21"	46"	10"	31"
3XL	22"	48"	10.5"	32"
5XL	24"	52"	11.5"	33.5"

Note : Size may varies +/-5% from the above mentioned chart.

• 180gsm | 5.31oz

**COLORS SELECTION**



UCP1101  
WHITE + BLACK



UCP1102  
BLACK + WHITE



UCP1103  
NAVY + WHITE

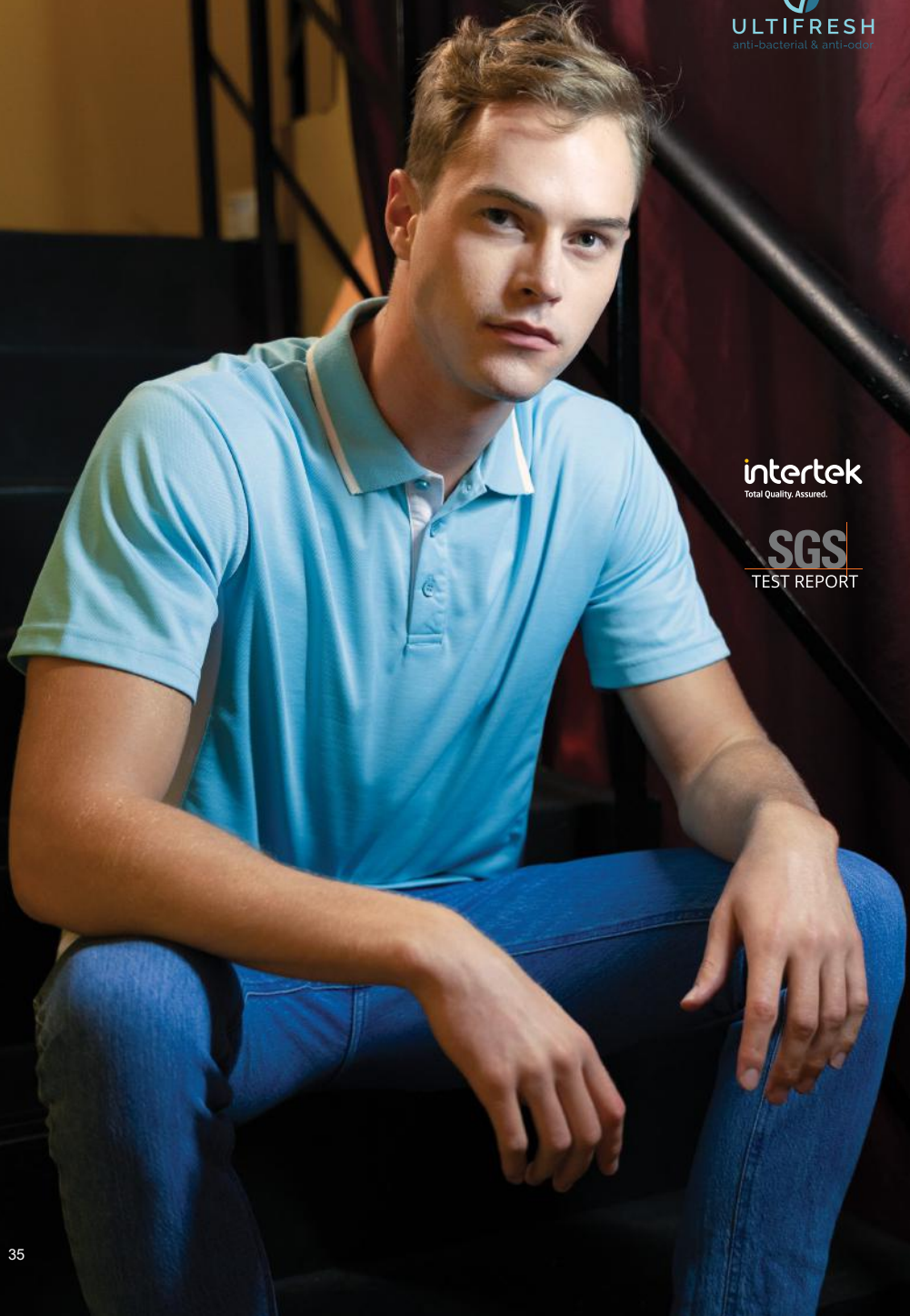


UCP1105  
MAROON + BLACK



UCP1129  
BLACK + GOLD





**ULTIFRESH**  
anti-bacterial & anti-odor

**intertek**  
Total Quality. Assured.

**SGS**  
TEST REPORT



**UCP13**  
**CONTRA POLO T-SHIRT**  
**(UNISEX)**

- 50% Polyester + 50% Cotton
- Outer Polyester + Inner Cotton
- Moisture Wicking & Sweat Absorbent
- Eco Friendly & Water Saving

**ULTIFRESH**  
**HYBRID**

Size	Shoulder	Chest	Sleeve	Length
2XS	15"	34"	7"	25"
XS	16"	36"	7.5"	26"
S	17"	38"	8"	27"
M	18"	40"	8.5"	28"
L	19"	42"	9"	29"
XL	20"	44"	9.5"	30"
2XL	21"	46"	10"	31"
3XL	22"	48"	10.5"	32"
5XL	24"	52"	11.5"	33.5"

Note : Size may varies +/-5% from the above mentioned chart.

• 190gsm | 5.60oz

**COLORS SELECTION**



UCP1301  
WHITE + GREY



UCP1307  
GREY + RED



UCP1310  
LIGHT BLUE + WHITE



UCP1334  
WHITE + GREEN



UCP1335  
WHITE + LIGHT BLUE

# ULTIFRESH DOUBLE PIQUE



## UH27 PREMIUM PLAIN POLO T-SHIRT (UNISEX)

- 60% Polyester + 40% Cotton
- Moisture Wicking & Sweat Absorbent
- Eco Friendly & Water Saving
- 220gsm | 6.49oz

**ULTIFRESH**  
anti-bacterial & anti-odor

**SGS**  
TEST REPORT

**intertek**  
Total Quality. Assured.

Size	Shoulder	Chest	Sleeve	Length
2XS	15"	34"	7"	25"
XS	16"	36"	7.5"	26"
S	17"	38"	8"	27"
M	18"	40"	8.5"	28"
L	19"	42"	9"	29"
XL	20"	44"	9.5"	30"
2XL	21"	46"	10"	31"
3XL	22"	48"	10.5"	32"
4XL	23"	50"	11"	33"
5XL	24"	52"	11.5"	33.5"

Note : Size may varies +/-5% from the above mentioned chart.

### COLORS SELECTION



UH2701  
WHITE



UH2702  
BLACK



UH2706  
LIGHT GREY



UH2707  
DARK GREY



UH2712  
NAVY BLUE



# ULTIFRESH DOUBLE PIQUE



Anti Bacterial  
& Anti-Odor  
Finishing

Double  
Pique Knit



## UH02

### FD TWIN TIPPED POLO T-SHIRT (UNISEX)

- 60% Polyester + 40% Cotton
- Dual Stripe Design
- Moisture Wicking & Sweat Absorbent
- Eco-Friendly & Water Saving



Size	Shoulder	Chest	Sleeve	Length
2XS	15"	34"	7"	25"
XS	16"	36"	7.5"	26"
S	17"	38"	8"	27"
M	18"	40"	8.5"	28"
L	19"	42"	9"	29"
XL	20"	44"	9.5"	30"
2XL	21"	46"	10"	31"
3XL	22"	48"	10.5"	32"
4XL	23"	50"	11"	33"
5XL	24"	52"	11.5"	33.5"

Note : Size may varies +/-5% from the above mentioned chart.

• 220gsm | 6.49oz



UH0202  
BLACK



UH0206  
LIGHT GREY



UH0207  
DARK GREY



UH0212  
NAVY BLUE



# ULTIFRESH DOUBLE PIQUE



Anti Bacterial  
& Anti-Odor  
Finishing

Contrast  
Mandarin  
Collar Design



## UH03

### ACE COLLAR POLO T-SHIRT (UNISEX)

- 60% Polyester + 40% Cotton
- Dual Stripe Design
- Moisture Wicking & Sweat Absorbent
- Eco-Friendly & Water Saving



UH0301  
WHITE + NAVY + RED



UH0302  
BLACK + GREY + RED



UH0307  
NAVY + GREY + RED



UH0330  
LIGHT GREY + BLACK + RED

Size	Shoulder	Chest	Sleeve	Length
2XS	15"	34"	7"	25"
XS	16"	36"	7.5"	26"
S	17"	38"	8"	27"
M	18"	40"	8.5"	28"
L	19"	42"	9"	29"
XL	20"	44"	9.5"	30"
2XL	21"	46"	10"	31"
3XL	22"	48"	10.5"	32"
5XL	24"	52"	11.5"	33.5"

Note : Size may varies +/-5% from the above mentioned chart.

• 220gsm | 6.49oz





# ULTIFRESH BOMBER

Anti Bacterial  
& Anti-Odor  
Finishing

Matching  
Collar Rib



## UVJ01

### ZIP UP JACKET (UNISEX)

- 100% Performance Dri-Fit Polyester
- 100% Polyester Inner Lining
- Moisture Wicking & Sweat Absorbent
- Eco Friendly & Water Saving

Size	Shoulder	Chest	Sleeve	Length
2XS	16"	37"	21.5"	25"
XS	17"	39"	22.5"	26"
S	18"	41"	23.5"	27"
M	18.5"	43"	24"	28"
L	19"	45"	25"	29"
XL	20"	47"	25.5"	30"
2XL	21"	49"	26.5"	31"
3XL	22"	51"	27"	32"
4XL	23"	53"	27.5"	33.5"
5XL	24"	55"	28"	34"

Note : Size may varies +/-5% from the above mentioned chart.

- Shell : 55gsm | 1.62oz
- Inner : 160gsm | 4.72oz



## COLORS SELECTION



UVJ0102  
BLACK



UVJ0103  
NAVY



UVJ0105  
MAROON



UVJ0120  
OLIVE



UVJ0128  
ORANGE





**UVJ03**  
**ZIP UP JACKET (UNISEX)**

- 92% Polyester + 8% Spandex
- Side Zip Pocket
- Matching Collar Rib
- Moisture Wicking & Sweat Absorbent
- Eco Friendly & Water Saving

**ULTIFRESH**  
**FULL MOON**

Size	Shoulder	Chest	Sleeve	Length
2XS	16"	37"	21.5"	25"
XS	17"	39"	22.5"	26"
S	18"	41"	23.5"	27"
M	18.5"	43"	24"	28"
L	19"	45"	25"	29"
XL	20"	47"	25.5"	30"
2XL	21"	48"	26.5"	31"
3XL	22"	51"	27"	32"
4XL	23"	53"	27.5"	33"

Note : Size may varies +/-5% from the above mentioned chart.

• 280gsm | 8.26oz

**COLORS SELECTION**



UVJ0302  
BLACK



UVJ0303  
NAVY



UVJ0307  
LIGHT GREY



# ULTIFRESH VARSITY JACKET

**UVJ05**

**VARSIY JACKET (UNISEX)**



- 92% Polyester + 8% Spandex
- Color Matching Matt Button
- 2 Front Pockets
- Moisture Wicking & Sweat Absorbent
- Eco Friendly & Water Saving

Size	Shoulder	Chest	Sleeve	Length
2XS	16"	37"	22"	23.5"
XS	17"	39"	22.5"	24.5"
S	18"	41"	23.5"	25.5"
M	18.5"	43"	24"	26.5"
L	19.5"	45"	25"	27.5"
XL	20"	47"	25.5"	28.5"
2XL	21"	48"	26.5"	29.5"
3XL	22"	51"	27.5"	30.5"
4XL	23"	53"	28"	31.5"

Note : Size may varies +/-5% from the above mentioned chart.

• 280gsm | 8.26oz

## COLORS SELECTION



UVJ0502  
BLACK + WHITE



UVJ0503  
NAVY BLUE + WHITE



UVJ0504  
CRIMSON RED + WHITE



UVJ0512  
ROYAL BLUE + WHITE



UVJ0526  
BLACK + RED



**BEAM APPAREL PROMOTES  
NEW MINIMALISM**

*A concept which allows our daily wear to be something comfortable,  
contemporary and be worn in nearly all occasions.*



**CLOVERPLUS**  
extra soft . extra comfort

*Be Amazed With Cloverplus Cotton*





BCK0103 : NAVY BLUE  
BEAM CLOVERPLUS  
COTTON

# BEAM PREMIUM COTTON

**NEW BCK01**

## SHORT SLEEVE T-SHIRT (KIDS)

- 100% BEAM Premium Cotton
- Available in 10 Colors
- Comfortable & Soft
- Enzyme Wash
- Matching Ribbed Collar
- Pre-Shrunk
- Tubular Body

Size	Shoulder	Chest	Sleeve	Length
2-4	11"	24"	5"	17"
5-6	12"	26"	6"	18"
7-8	13"	28"	6.5"	20"
9-10	15"	30"	6.5"	21"
11-12	15"	34"	7"	23"

Note : Size may varies +/-5% from the above mentioned chart.

- 170gsm | 5.01oz (BCK0101)
- 160gsm | 4.72oz (THE REST)



*Cloverplus Cotton are enzyme washed & they are more comfortable than normal cotton. It's the perfect solution for work, play & daily wear.*

### COLORS SELECTION



BCK0101  
WHITE



BCK0102  
BLACK



BCK0103  
NAVY BLUE



BCK0104  
RED



BCK0105  
MAROON



BCK0106  
LIGHT GREY



BCK0112  
ROYAL BLUE



BCK0113  
ORANGE



BCK0117  
YELLOW



BCK0146  
KELLY GREEN



BCR0105 : MAROON  
BEAM CLOVERPLUS  
COTTON

# BEAM PREMIUM COTTON

**NEW BCR01**  
**SHORT SLEEVE**  
**T-SHIRT (UNISEX)**

- 100% BEAM Premium Cotton
  - Available in 10 Colors
  - Comfortable & Soft
  - Enzyme Wash
  - Matching Ribbed Collar
  - Pre-Shrunk
  - Suitable for all Asian Physiques
  - Tubular Body
- 170gsm | 5.01oz (BCR0101)
  - 160gsm | 4.72oz (THE REST)

Size	Shoulder	Chest	Sleeve	Length
XS	16"	36"	7"	25.5"
S	16.5"	38"	8"	27"
M	17.5"	40"	8.5"	28"
L	18.5"	42"	8.5"	29"
XL	19.5"	44"	9"	30"
2XL	21"	46"	9.5"	31"
3XL	22"	48"	10"	32"
4XL	22.5"	50"	10.5"	33"
5XL	23"	52"	11"	34"
7XL	25"	56"	12"	36"

Note : Size may varies +/-5% from the above mentioned chart.



*Cloverplus Cotton are enzyme washed & they are more comfortable than normal cotton. It's the perfect solution for work, play & daily wear.*

## COLORS SELECTION



BCR0101  
WHITE



BCR0102  
BLACK



BCR0103  
NAVY BLUE



BCR0104  
RED



BCR0105  
MAROON



BCR0106  
LIGHT GREY



BCR0112  
ROYAL BLUE



BCR0113  
ORANGE



BCR0117  
YELLOW



BCR0146  
KELLY GREEN

BCRG0102 : BLACK  
BEAM CLOVERPLUS  
COTTON

# BEAM SUPREME COTTON

**NEW BCRG01**  
**200 GSM SHORT SLEEVE  
T-SHIRT (UNISEX)**

- 100% BEAM Supreme Cotton
- Available in 2 Colors
- Breathable & Durable
- Comfortably Styled & Soft Textured
- Enzyme Wash
- Matching Ribbed Collar
- Pre-Shrunk
- Side Seam
- Suitable for all Asian Physiques
- 200gsm | 5.90oz

Size	Shoulder	Chest	Sleeve	Length
XS	16"	36"	7"	25.5"
S	16.5"	38"	8"	27"
M	17.5"	40"	8.5"	28"
L	18.5"	42"	8.5"	29"
XL	19.5"	44"	9"	30"
2XL	21"	46"	9.5"	31"
3XL	22"	48"	10"	32"
4XL	22.5"	50"	10.5"	33"
5XL	23"	52"	11"	34"
7XL	25"	56"	12"	36"

Note : Size may varies +/-5% from the above mentioned chart.



*Cloverplus Cotton are enzyme washed & they are more comfortable than normal cotton. It's the perfect solution for work, play & daily wear.*

## COLORS SELECTION



BCRG0101  
WHITE



BCRG0102  
BLACK





CLOVERPLUS  
extra soft. extra comfort.

BPT0101 : WHITE  
BEAM CLOVERPLUS  
COTTON



# BEAM LACOSTE COTTON

## BPT01 POLO T-SHIRT (UNISEX)

- 100% BEAM Lacoste Cotton
- Available in 10 Colors
- BEAM Signature Polo Style
- Designed to Fit Your Contour Perfectly
- Enzyme Wash
- Highly Breathable, Comfortable & Durable
- Matching Buttons, Cuffs & Ribbed Collar
- Pre-Shrunk
- Smart Casual Outlook

- 200gsm | 5.90oz (BPT0101)
- 190gsm | 5.60oz (THE REST)

Size	Shoulder	Chest	Sleeve	Length
2XS	15"	34"	7"	25"
XS	16"	36"	7.5"	26"
S	17"	38"	8"	27"
M	18"	40"	8.5"	28"
L	19"	42"	9"	29"
XL	20"	44"	9.5"	30"
2XL	21"	46"	10"	31"
3XL	22"	48"	10.5"	32"
4XL	23"	50"	11"	33"
5XL	24"	52"	11.5"	33.5"
7XL	26"	56"	12"	36"

Note : Size may varies +/-5% from the above mentioned chart.



CLOVERPLUS  
extra soft. extra comfort.

*Cloverplus Cotton are enzyme washed & they are more comfortable than normal cotton. It's the perfect solution for work, play & daily wear.*

### COLORS SELECTION



BPT0101  
WHITE



BPT0102  
BLACK



BPT0103  
NAVY BLUE



BPT0104  
RED  
**NEW**



BPT0105  
MAROON  
**NEW**



BPT0106  
LIGHT GREY  
**NEW**



BPT0112  
ROYAL BLUE  
**NEW**



BPT0113  
ORANGE  
**NEW**



BPT0117  
YELLOW  
**NEW**



BPT0146  
KELLY GREEN  
**NEW**



BCL0105 : MAROON  
BEAM CLOVERPLUS  
COTTON

# BEAM PREMIUM COTTON

**NEW BCL01**  
**LONG SLEEVE**  
**T-SHIRT (UNISEX)**

- 100% BEAM Premium Cotton
  - Available in 10 Colors
  - Comfortable & Soft
  - Enzyme Wash
  - Matching Ribbed Collar
  - Pre-Shrunk
  - Tailored to Fit All Body Contours
  - Tubular Body
- 170gsm | 5.01oz (BCL0101)  
• 160gsm | 4.72oz (THE REST)

Size	Shoulder	Chest	Sleeve	Length
2XS	15"	34"	20"	25"
XS	16"	36"	21"	26"
S	17"	38"	22"	27"
M	18"	40"	23"	28"
L	19"	42"	24"	29"
XL	20"	44"	25"	30"
2XL	21"	46"	26"	31"
3XL	22"	48"	27"	32"
4XL	23"	50"	28"	33"
5XL	24"	52"	28.5"	33.5"

Note : Size may varies +/-5% from the above mentioned chart.



*Cloverplus Cotton are enzyme washed & they are more comfortable than normal cotton. It's the perfect solution for work, play & daily wear.*

## COLORS SELECTION



BCL0101  
WHITE



BCL0102  
BLACK



BCL0103  
NAVY BLUE



BCL0104  
RED



BCL0105  
MAROON



BCL0106  
LIGHT GREY



BCL0112  
ROYAL BLUE



BCL0113  
ORANGE



BCL0117  
YELLOW



BCL0146  
KELLY GREEN





**BEAM**  
QUALITY APPAREL

**HDR30**  
**HOODIE WITHOUT ZIP**

Size	Shoulder	Chest	Sleeve	Length
2XS	15"	34"	23"	24.5"
XS	16"	36"	24.5"	25.5"
S	17"	38"	24.5"	26"
M	17.5"	41"	25"	27.5"
L	18.5"	43"	26"	28.5"
XL	19"	46"	27"	30"
2XL	20"	48"	27.5"	31"
3XL	20.5"	50"	28"	31.5"
4XL	21.5"	52.5"	29"	32.5"

Note : Size may varies +/-5% from the above mentioned chart.  
• 220gsm | 6.49oz

Unlined Hood With Matching Drawstring



- Cotton / Polyester Blend
- Kangaroo Pockets With Ribbed Finishing
- Double Needle Cuffs And Waistband For Extra Durability

**COLORS SELECTION**



HDR3001  
PEARL WHITE



HDR3002  
ONYX BLACK



HDR3003  
NAVY BLUE



HDR3004  
CRIMSON RED



HDR3006  
LIGHT GREY





**BEAM**  
QUALITY APPAREL

**HDR40**  
**HOODIE WITH ZIP**

Size	Shoulder	Chest	Sleeve	Length
2XS	15"	34"	23"	24.5"
XS	16"	36"	24.5"	25.5"
S	17"	38"	24.5"	26"
M	17.5"	41"	25"	27.5"
L	18.5"	43"	26"	28.5"
XL	19"	46"	27"	30"
2XL	20"	48"	27.5"	31"
3XL	20.5"	50"	28"	31.5"
4XL	21.5"	52.5"	29"	32.5"

Note : Size may varies +/-5% from the above mentioned chart.  
 • 220gsm | 6.49oz

Unlined Hood With Matching Drawstring



- Cotton / Polyester Blend
- Pouch Pockets
- Matching Zip
- Double Needle Cuffs And Waistband For Extra Durability

**COLORS SELECTION**



HDR4001  
PEARL WHITE



HDR4002  
ONYX BLACK



HDR4003  
NAVY BLUE



HDR4004  
CRIMSON RED



HDR4006  
LIGHT GREY





**RGN21**  
**LONG SLEEVE**  
**SWEAT SHIRT (UNISEX)**

Size	Shoulder	Chest	Sleeve	Length
2XS	15"	33.5"	22"	24.5"
XS	16"	36"	24"	25.5"
S	17"	38.5"	24"	26"
M	17.5"	41"	25"	27.5"
L	18.5"	43"	25.5"	28.5"
XL	19"	45.5"	26.5"	30"
2XL	20"	48"	27"	31"
3XL	20.5"	50"	28"	31.5"
4XL	21.5"	52.5"	29"	32.5"
5XL	22"	53"	29"	34.5"
7XL	24"	59"	31.5"	35"



- Cotton / Polyester Blend
- Crew Neck, Long Sleeve Design
- Available in 6 Colors
- Double Needle Cuffs and Waistband For Extra Durability

Note : Size may varies +/-5% from the above mentioned chart.

• 220gsm | 6.49oz

**COLORS SELECTION**



RGN2101  
PEARL WHITE



RGN2102  
ONYX BLACK



RGN2103  
NAVY BLUE



RGN2104  
CRIMSON RED



RGN2106  
LIGHT GREY



RGN2138  
LIGHT PINK



**BEAM**  
QUALITY APPAREL

**AKJ01**  
**LIGHTWEIGHT MICROFIBER**  
**JACKET IN A BAG (PACKABLE)**



*Unique printed patterns*

- 100% Light Weight Polyester
- UPF40 + Coating
- Fully Sewn Built in Hoodie Design
- Packable Drawstring Bag Included
- Comes with Unique Pattern Prints on Front Panel

Size	Chest	Sleeve	Length
S	40"	27.5"	25"
M	41"	28.5"	26"
L	43"	29"	26.5"
XL	44"	30"	27"
2XL	46"	31"	28"
3XL	48"	31.5"	29"
4XL	49"	32.5"	29.5"

Note : Size may varies +/-5% from the above mentioned chart.

**COLORS SELECTION**



AKJ0101  
BLACK



AKJ0102  
ROYAL BLUE



AKJ0103  
LIME GREEN



AKJ0104  
ORANGE



AKJ0105  
YELLOW



AKJ0106  
SKY BLUE



AKJ0107  
RED



AKJ0108  
BRIGHT PINK



AKJ0110  
PINK



AKJ0111  
WHITE

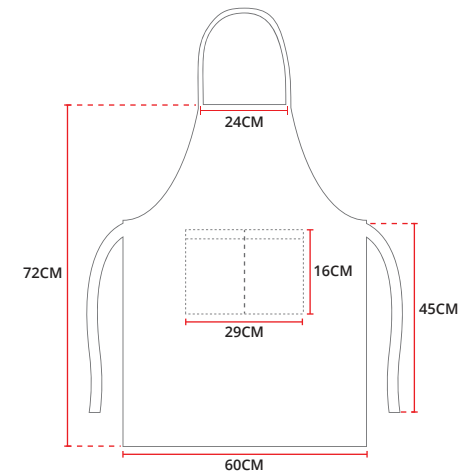




**BEAM**  
QUALITY APPAREL

**APR10**  
**APRON**  
**100% POLYESTER**

- 100% Polyester
- Back Lace Design
- Front Pockets
- Customizable
- Available In 12 Colors
- Free Size
- 140gsm | 4.13oz



Note : Size may varies +/-5% from the above mentioned chart.

**COLORS SELECTION**



APR101  
BURGUNDY



APR102  
ORANGE



APR103  
PEARL WHITE



APR104  
SKY BLUE



APR105  
LIME GREEN



APR106  
ROSE PINK



APR107  
YELLOW



APR108  
BLACK



APR109  
COFFEE



APR110  
RED



APR111  
KHAKI



APR112  
NAVY BLUE



**FTL3**  
**OXFORD CORPORATE**  
**SHIRT (UNISEX)**

Size	Shoulder	Chest	Sleeve	Length
S (38)	16.5"	37"	21.5"	27"
M (39)	17"	39"	22"	28.5"
L (40)	17"	40"	22"	29"
XL (41)	17.5"	42"	22"	30"
2XL (42)	18"	44"	22.5"	29.5"
3XL (43)	19"	46"	23"	30"
4XL (44)	19"	47"	23"	30"

Note : Size may varies +/-5% from the above mentioned chart.

• 170gsm | 5.01oz



- 60% Cotton + 40% Oxford Fabric
- Hidden Buttons Behind Collar For An Alternate Look
- One Chest Pocket On The Left
- Full Placket Buttons

**COLORS SELECTION**



FTL301  
PEARL WHITE



FTL302  
ONYX BLACK



FTL303  
NAVY BLUE



FTL306  
LIGHT GREY



FTL338  
LIGHT PINK



FTL340  
LAKE BLUE





**BEAM**  
QUALITY APPAREL

**ACS11**

**HIGH QUALITY CORPORATE  
LONG SLEEVE SHIRT**

- 40% Cotton + 60% Polyester Fabric
- Full Placket Buttons
- Moisture Wicking Technology
- Poplin Finishing
- V-Edge Collar Design With Iron Fusing

**UNISEX**

Size	Shoulder	Chest	Sleeve	Length
S (38)	16.5"	37"	22"	28.5"
M (39)	17"	38"	22.5"	28.5"
L (40)	17.5"	39"	22.5"	28.5"
XL (41)	18"	40"	22.5"	29.5"
2XL (42)	18.5"	43"	23.5"	30"
3XL (43)	19.5"	45"	23.5"	31"
4XL (44)	19.5"	46"	24"	31"

Note : Size may varies +/-5% from the above mentioned chart.  
• 120gsm | 3.54oz



**BEAM**  
QUALITY APPAREL

**FTL1**

**HIGH QUALITY CORPORATE  
LONG SLEEVE SHIRT**

**FEMALE**

Size	Shoulder	Chest	Sleeve	Length
XS (35)	15"	35"	21"	23"
S (36)	15"	36"	21"	23.5"
M (37)	16"	38"	21"	24.5"
L (38)	16"	39"	21.5"	25"
XL (39)	17"	41"	21.5"	25.5"
2XL (40)	17"	42"	22.5"	26"
3XL (41)	17.5"	44"	22.5"	26.5"
5XL (42)	18"	45"	23"	27"

Note : Size may varies +/-5% from the above mentioned chart.  
• 120gsm | 3.54oz

**COLORS SELECTION**



ACS110  
MAROON RED



ACS111  
BLACK



ACS112  
LIGHT PINK



ACS113  
LIGHT BLUE



ACS114  
WHITE



**COLORS SELECTION**



FTL101  
WHITE



FTL110  
LIGHT BLUE



FTL138  
PINK



**TCSI**

**HIGH QUALITY CORPORATE  
SHORT SLEEVE SHIRT**

- 40% Cotton + 60% Polyester Fabric
- Full Placket Buttons
- Moisture Wicking Technology
- Poplin Finishing
- V-Edge Collar Design With Iron Fusing

**UNISEX**

Size	Shoulder	Chest	Sleeve	Length
S (38)	17"	36"	8"	28.5"
M (39)	17"	38"	8"	28.5"
L (40)	17.5"	41"	8"	29"
XL (41)	18"	42"	8.5"	29"
2XL (42)	18"	43"	8.5"	30"
3XL (43)	19"	46"	8.5"	30"
4XL (44)	19.5"	48"	9"	30.5"

Note : Size may varies +/-5% from the above mentioned chart.  
• 120gsm | 3.54oz



**FTS1**

**HIGH QUALITY CORPORATE  
SHORT SLEEVE SHIRT**

**FEMALE**

Size	Shoulder	Chest	Sleeve	Length
XS (35)	15"	35"	6.5"	23"
S (36)	16"	36"	6.5"	23.5"
M (37)	16"	38"	7"	24"
L (38)	16.5"	40"	7"	25"
XL (39)	17"	41"	8"	25.5"
2XL (40)	17"	42"	8"	26"
3XL (41)	17"	43"	8.5"	27"
5XL (42)	18"	46"	8.5"	27.5"

Note : Size may varies +/-5% from the above mentioned chart.

• 120gsm | 3.54oz



**COLORS SELECTION**



TCS101  
WHITE



TCS102  
BLACK



TCS110  
LIGHT BLUE



**COLORS SELECTION**



FTS101  
WHITE



FTS102  
BLACK



FTS110  
LIGHT BLUE







CBM3502  
BLACK

CBM3503  
NAVY BLUE

- 65% Polyester 35% Rayon
- 100% Polyester (Shell)
- Flat Collar Design
- 2 Buttons
- 3 External Pockets & 2 Internal Pockets
- Full Suit Available

**BEAM**  
QUALITY APPAREL

**PREMIUM**

**2 BUTTON FITTED BLAZER  
(MALE CUTTING)**

**JACKET SIZE CHART**

Size	Shoulder	Chest	Sleeve	Length
165/S	15.5"	34"	22"	26.5"
170/M	16"	37"	23"	27.5"
175/L	16.5"	39"	23.5"	28"
180/XL	17"	40"	24"	29"
185/2XL	17.5"	42"	24.5"	29.5"
190/3XL	18"	43"	25.5"	30"
195/4XL	18.5"	45"	25.5"	31"

Note : Size may varies +/-5% from the above mentioned chart.



PAT0102  
BLACK

PAT0103  
NAVY BLUE

**PANT SIZE CHART**

Size	Waist	Hip	Length
165/S	29"	36.2"	39.3"
170/M	30"	37.4"	40"
175/L	31.5"	38.5"	41"
180/XL	32.6"	40"	41.7"
185/2XL	34"	41.3"	42.5"
190/3XL	35.8"	43"	42.5"
195/4XL	37.4"	44.5"	42.5"

Note : Size may varies +/-5% from the above mentioned chart.



Classic Button Down  
Back Pocket

Elastic Waist Band  
Design



**BEAM**  
QUALITY APPAREL

## PREMIUM

### 2 BUTTON FITTED BLAZER (FEMALE CUTTING)



CBM2502  
BLACK

CBM2503  
NAVY BLUE

- 65% Polyester 35% Rayon
- 100% Polyester (Shell)
- Flat Collar Design
- 2 Buttons
- 2 External Pockets
- Full Suit Available

#### JACKET SIZE CHART

Size	Shoulder	Chest	Sleeve	Length
155/XS	13.5"	31"	22"	23"
160/S	13.5"	33"	22.5"	23"
165/M	14"	34"	22.5"	24"
170/L	14.5"	35"	22.5"	24.5"
175/XL	15.5"	38"	23"	25"
180/2XL	16"	39"	23"	26"
185/3XL	16"	40"	23.5"	26"
190/4XL	16.5"	42"	24"	27"

Note : Size may varies +/-5% from the above mentioned chart.



SKT0202  
BLACK

SKT0203  
NAVY BLUE

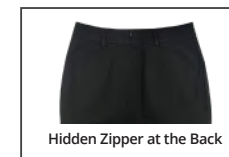
#### SKIRT SIZE CHART

Size	Waist	Hip	Length
155/XS	24.8"	33"	18"
160/S	26.3"	34.6"	18.3"
165/M	27.5"	36.2"	18.5"
170/L	29"	37.8"	19.7"
175/XL	30"	39.3"	19"
180/2XL	32.2"	41"	19"
185/3XL	33.8"	42.5"	19.3"
190/4XL	35.4"	44"	19.3"

Note : Size may varies +/-5% from the above mentioned chart.



2 Side Pockets in Front



Hidden Zipper at the Back





**PRE-ORDER**



**BEAM**  
QUALITY APPAREL

- 100% Premium Cotton
  - Matching Ribbed Collar
  - Available in 7 Colors
  - 2/4 years - 13/14 years
- 170gsm-175gsm

**KSS01**  
**SHORT SLEEVE T-SHIRT (KIDS)**

Size	Shoulder	Chest	Sleeve	Length
2-4	11"	24"	5"	17"
5-6	12"	26"	6"	18"
7-8	13"	28"	6.5"	20"
9-10	15"	30"	6.5"	21"
11-12	15"	34"	7"	23"
13-14	17"	36"	7"	24"

Note : Size may varies +/-5% from the above mentioned chart.



**COLORS SELECTION**



KSS01-18  
LIME GREEN



KSS01-23  
PURPLE



KSS01-39  
INDIGO BLUE



KSS01-40  
BOTTLE GREEN



KSS01-41  
OLIVE



KSS01-44  
AQUA



KSS01-45  
FUSCHIA



## USS01 SHORT SLEEVE T-SHIRT (UNISEX)

- 100% Premium Cotton (Unisex)
- Matching Rib Collar
- Available In 9 Colors
- XS-5XL Size

Size	Shoulder	Chest	Sleeve	Length
XS	15"	36"	7"	26"
S	17"	38"	7.5"	27"
M	18"	40"	7.5"	28"
L	19"	42"	8"	29"
XL	20"	44"	8"	30"
2XL	20.5"	46"	8.5"	31"
3XL	22"	48"	8.5"	31.5"
4XL	23"	50"	9"	32"
5XL	24"	52"	9.5"	33"

Note : Size may varies +/-5% from the above mentioned chart.

### COLORS SELECTION



USS01-18  
LIME GREEN



USS01-23  
PURPLE



USS01-39  
INDIGO BLUE



USS01-40  
BOTTLE GREEN



USS01-41  
OLIVE



USS01-42  
SAND



USS01-43  
STONE



USS01-44  
AQUA



USS01-45  
FUSCHIA



## UPT01 POLO T-SHIRT (UNISEX)

- 100% Premium "LACOSTE" Fabric
- Matching Color Button
- Matching Ribbed Collar & Cuffs
- Available In 5 Colors
- XS-3XL Size

Size	Shoulder	Chest	Sleeve	Length
XS	15"	36"	8"	26"
S	16"	38"	8.5"	27"
M	18"	40"	8.5"	28"
L	18"	41"	9"	29"
XL	19"	44"	9"	30"
2XL	20"	44"	9.5"	30.5"
3XL	21"	48"	9.5"	31"

Note : Size may varies +/-5% from the above mentioned chart.

### COLORS SELECTION



UPT01-18  
LIME GREEN



UPT01-23  
PURPLE



UPT01-40  
BOTTLE GREEN



UPT01-44  
AQUA



UPT01-45  
FUSCHIA